

Ebbles Miniatures

www.ebblesminiatures.com

1/60 SCALE CARD MODEL



VU-22 PERCHERON

MODEL INFORMATION

8 PAGES, 30 PARTS TOTAL

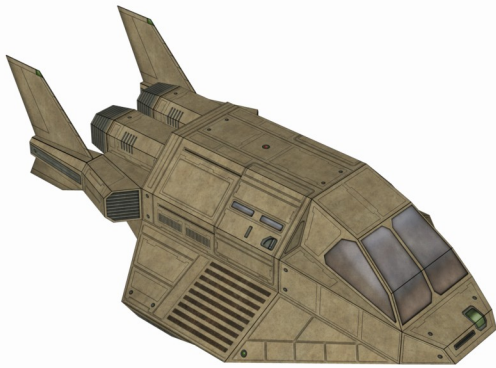
DIMENSIONS: 2.78" TALL x 5.38" WIDE x 9.25" LONG (71mm x 137mm x 235mm)

DIFFICULTY LEVEL: INTERMEDIATE (SOME CARD MODELING EXPERIENCE RECOMMENDED)

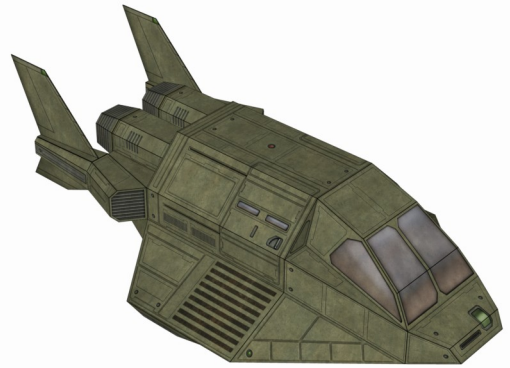
RECOMMENDED CARD WEIGHT: 160-175gsm (60-67lb)

COMPATIBLE WITH 28mm SIZED MINIATURES

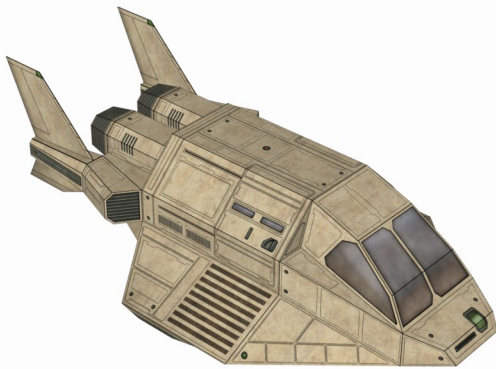
SAND GRAY



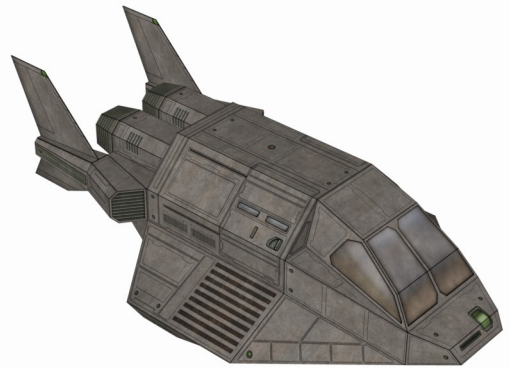
OLIVE DRAB



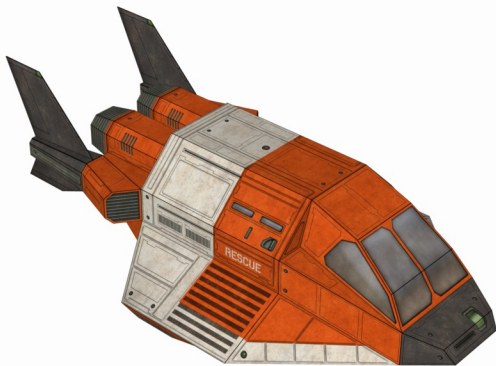
TAN



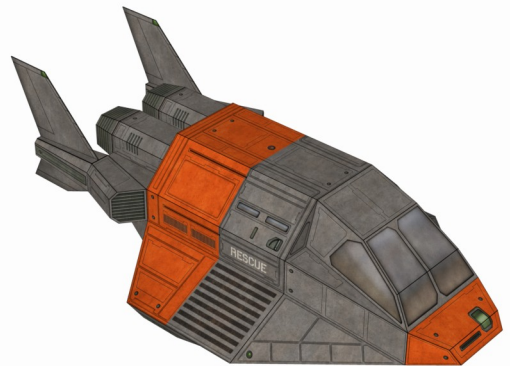
GRAY



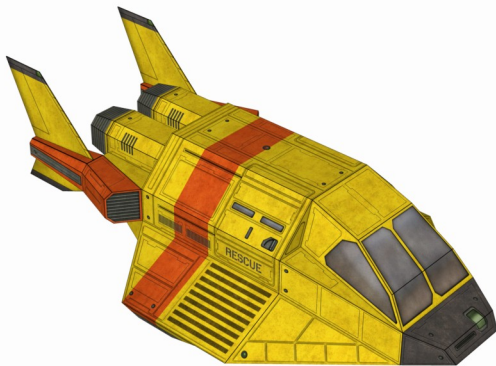
SEARCH AND RESCUE 1



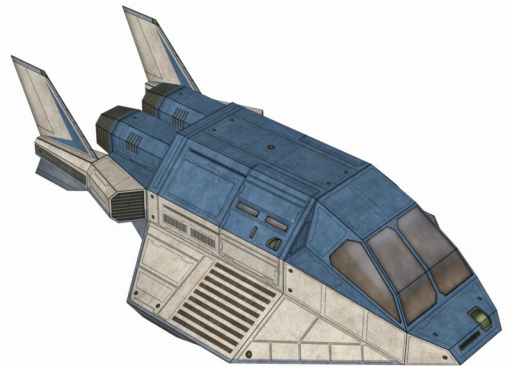
SEARCH AND RESCUE 2



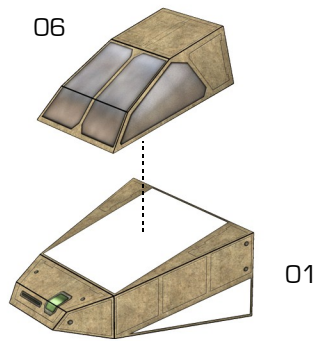
SEARCH AND RESCUE 3



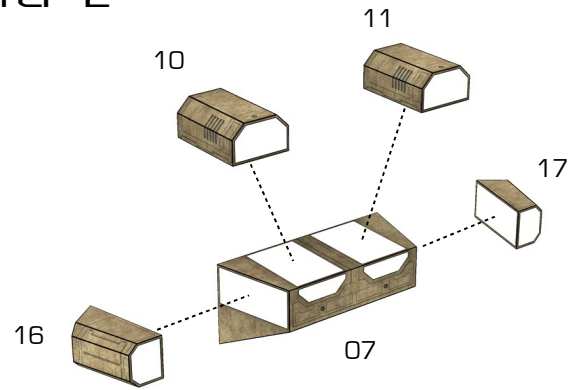
VIP TRANSPORT



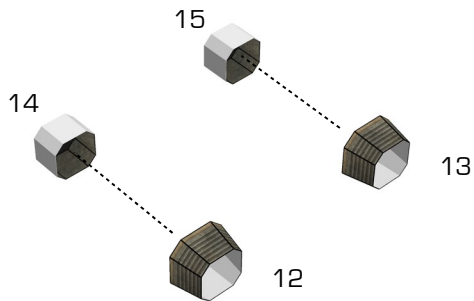
STEP 1



STEP 2

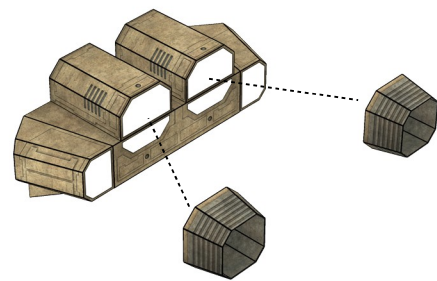


STEP 3

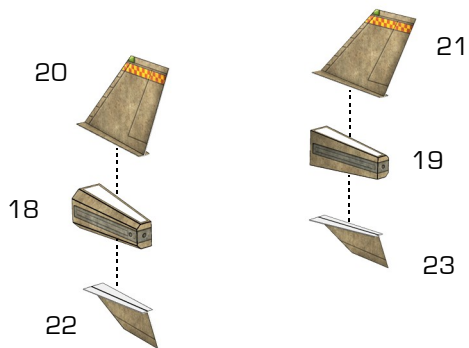


Use tape to hold Parts 14 and 15 in their final shape. Apply a thin bead of glue around the open end, then slide them into Parts 12 and 13. Close off Parts 12 and 13 afterwards.

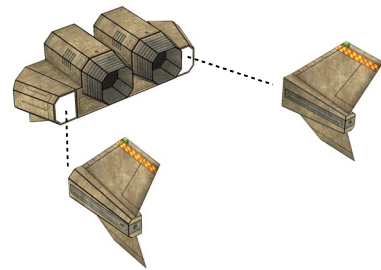
STEP 4



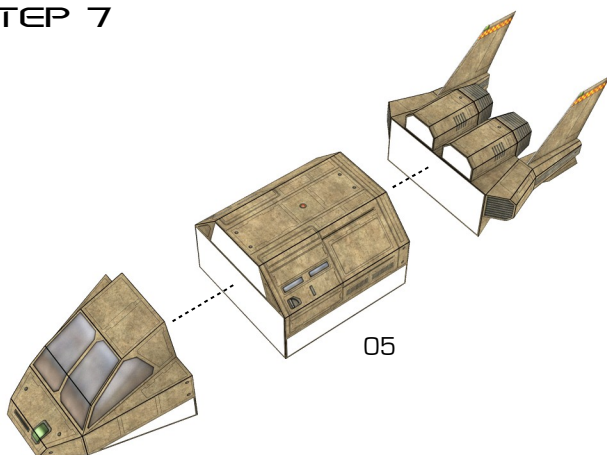
STEP 5



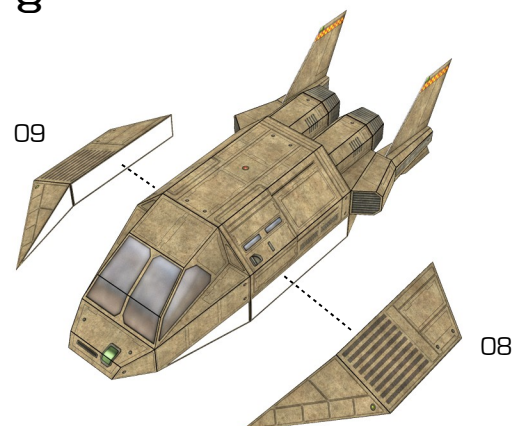
STEP 6



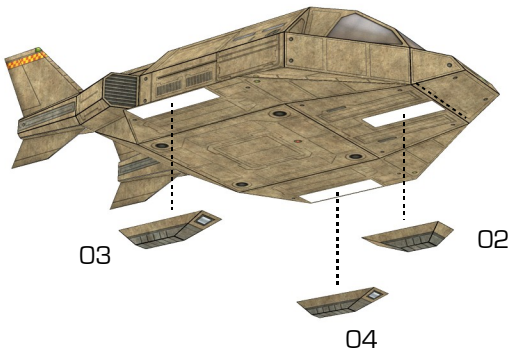
STEP 7



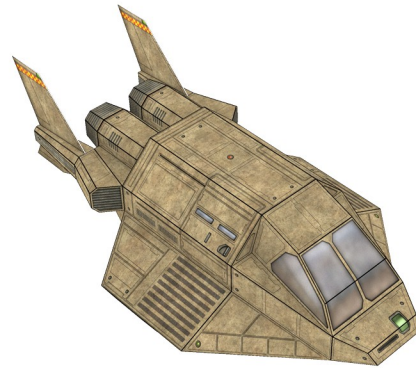
STEP 8



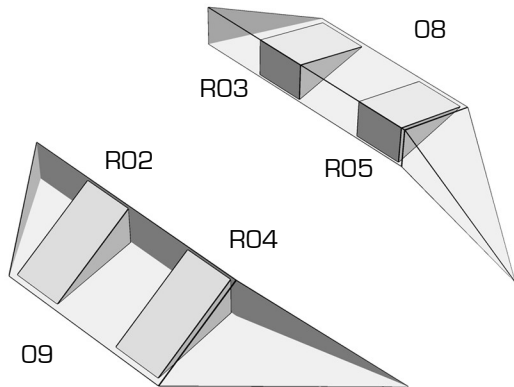
STEP 9



FINISHED

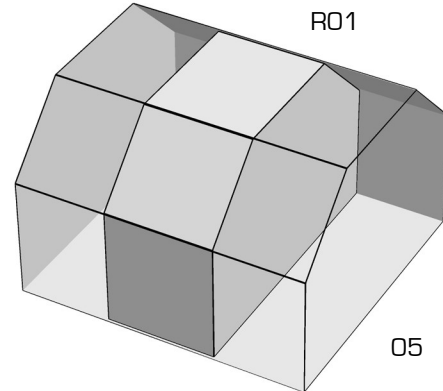


WING REINFORCERS



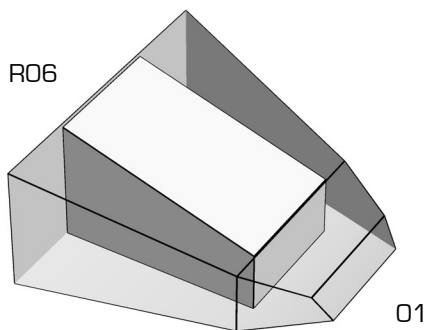
These reinforcers should be glued to the side walls only.

CABIN REINFORCER



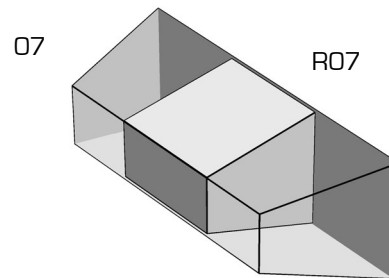
This reinforcer should be glued to the bottom only.

NOSE REINFORCER



This reinforcer should be glued to the rear bulkhead only.

TAIL REINFORCER



This reinforcer should be glued to the front bulkhead only.

USING THE REINFORCERS

The reinforcers are intended to be used when the model is built with thin 160-175gsm (60-67lb) cardstock. If using heavier cardstock, test fit the reinforcers before gluing the parts together. If the part can be completely closed with ease and the reinforcers do not cause any bulges or distortions, the part may safely be glued together.

Note that the reinforcers are only glued to one “wall” of the part—do not apply glue to all surfaces of the reinforcer. This minimizes errors and allows a better fit, as the reinforcer only needs to be aligned against one surface.